

Piano

M.Lington

инстр. А.Алексеев

$\text{♩} = 82$

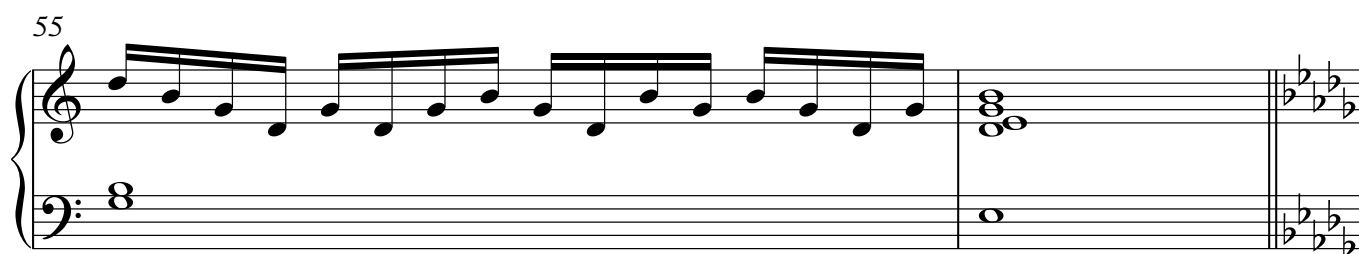
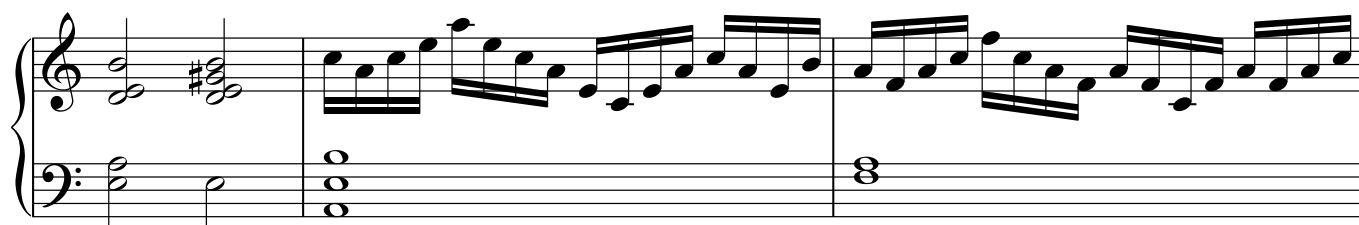
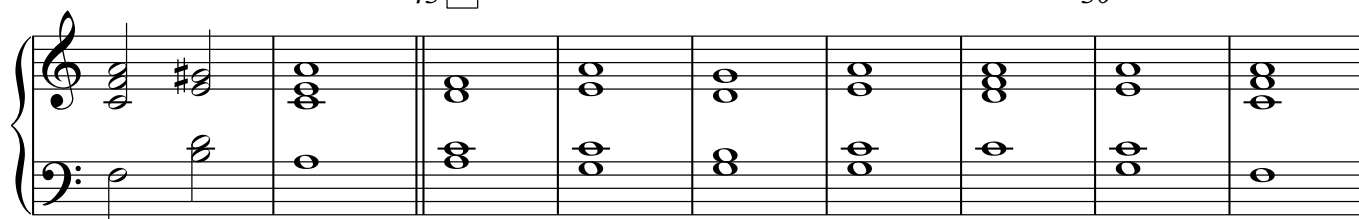
5 40

The musical score for 'The Rose Tree' is presented in a two-staff format. The first staff is in treble clef with a key signature of one flat (B-flat). The melody begins with a quarter rest, followed by a series of eighth and sixteenth notes. The second staff is in bass clef and contains a single quarter rest. The score is divided into two measures by a double bar line. The first measure of the second system contains a whole note chord in the bass staff and a whole note chord in the treble staff. The second measure of the second system contains a whole note chord in the bass staff and a whole note chord in the treble staff. The score is marked with a '5' in a box above the first measure of the second system and a '40' above the second measure of the second system.

V.S.

45 6

50

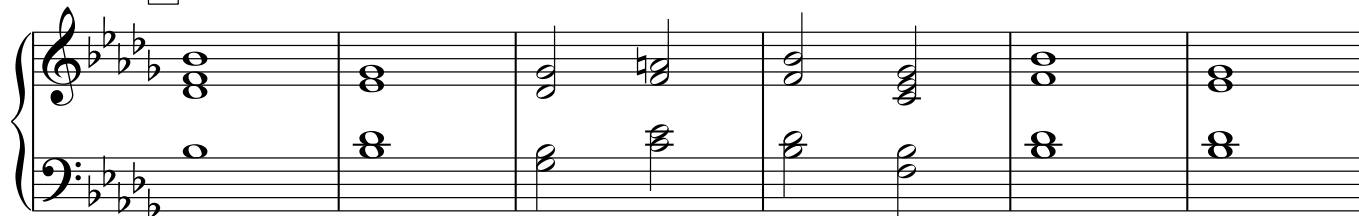
7

60

8

65

70



75

